

CYP4B1 Antibody (Center)
Purified Rabbit Polyclonal Antibody (Pab)
Catalog # AP8650C**Specification**

CYP4B1 Antibody (Center) - Product Information

Application	WB, IF, IHC-P,E
Primary Accession	P13584
Reactivity	Human
Host	Rabbit
Clonality	Polyclonal
Isotype	Rabbit IgG
Calculated MW	58991
Antigen Region	331-362

CYP4B1 Antibody (Center) - Additional Information**Gene ID** 1580**Other Names**

Cytochrome P450 4B1, CYP4B1, Cytochrome P450-HP, CYP4B1

Target/Specificity

This CYP4B1 antibody is generated from rabbits immunized with a KLH conjugated synthetic peptide between 331-362 amino acids from the Central region of human CYP4B1.

Dilution

WB~~1:1000

IF~~1:10~50

IHC-P~~1:10~50

E~~Use at an assay dependent concentration.

Format

Purified polyclonal antibody supplied in PBS with 0.09% (W/V) sodium azide. This antibody is prepared by Saturated Ammonium Sulfate (SAS) precipitation followed by dialysis against PBS.

Storage

Maintain refrigerated at 2-8°C for up to 2 weeks. For long term storage store at -20°C in small aliquots to prevent freeze-thaw cycles.

Precautions

CYP4B1 Antibody (Center) is for research use only and not for use in diagnostic or therapeutic procedures.

CYP4B1 Antibody (Center) - Protein Information**Name** CYP4B1

Function Cytochromes P450 are a group of heme-thiolate monooxygenases. In liver microsomes, this enzyme is involved in an NADPH-dependent electron transport pathway. It oxidizes a variety of structurally unrelated compounds, including steroids, fatty acids, and xenobiotics.

Cellular Location

Endoplasmic reticulum membrane; Peripheral membrane protein. Microsome membrane; Peripheral membrane protein

Tissue Location

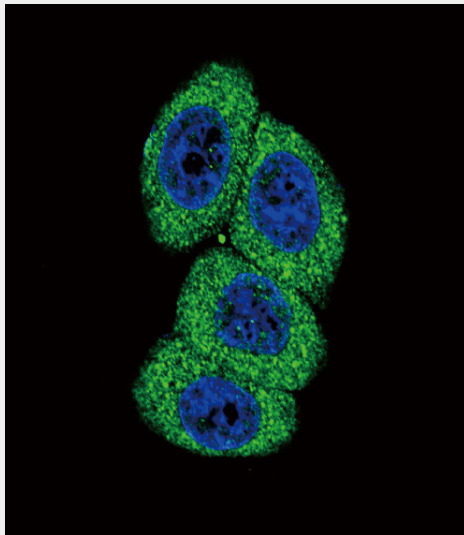
Detected in the liver and lung (at protein level).

CYP4B1 Antibody (Center) - Protocols

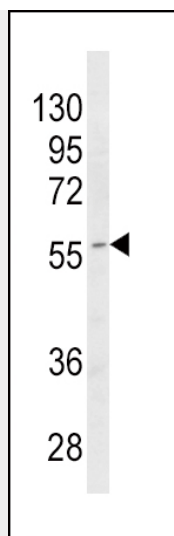
Provided below are standard protocols that you may find useful for product applications.

- [Western Blot](#)
- [Blocking Peptides](#)
- [Dot Blot](#)
- [Immunohistochemistry](#)
- [Immunofluorescence](#)
- [Immunoprecipitation](#)
- [Flow Cytometry](#)
- [Cell Culture](#)

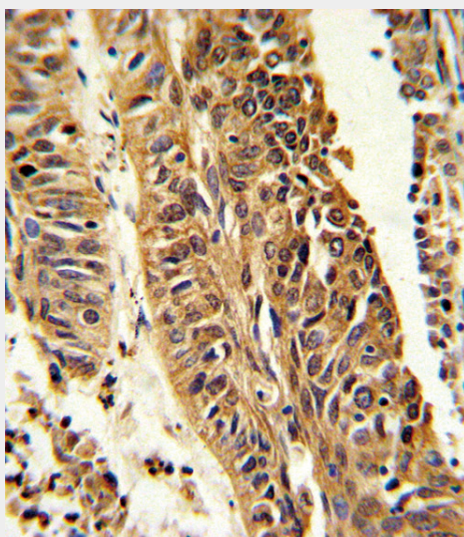
CYP4B1 Antibody (Center) - Images



Confocal immunofluorescent analysis of CYP4B1 Antibody (Center) (Cat. #AP8650c) with HeLa cell followed by Alexa Fluor 488-conjugated goat anti-rabbit IgG (green). DAPI was used to stain the cell nuclear (blue).



Western blot analysis of CYP4B1 Antibody (Center) (Cat. #AP8650c) in MDA-MB468 cell line lysates (35ug/lane). CYP4B1 (arrow) was detected using the purified Pab.



Formalin-fixed and paraffin-embedded human lung carcinoma reacted with CYP4B1 Antibody (Center) (Cat. #AP8650c), which was peroxidase-conjugated to the secondary antibody, followed by DAB staining. This data demonstrates the use of this antibody for immunohistochemistry; clinical relevance has not been evaluated.

CYP4B1 Antibody (Center) - Background

CYP4B1 is a member of the cytochrome P450 superfamily of enzymes. The cytochrome P450 proteins are monooxygenases which catalyze many reactions involved in drug metabolism and synthesis of cholesterol, steroids and other lipids. This protein localizes to the endoplasmic reticulum. In rodents, the homologous protein has been shown to metabolize certain carcinogens; however, the specific function of the human protein has not been determined.

CYP4B1 Antibody (Center) - References

McKinnon,R.A., et.al., Pharmacogenetics 4 (5), 260-270 (1994)
Yokotani,N., et.al., Eur. J. Biochem. 187 (1), 23-29 (1990)